



COPYRIGHT AGENCY LIMITED®

CAL payments for artistic works and accompanying text

Updated July 2009



More information

Copyright Agency Limited
Level 15, 233 Castlereagh Street,
Sydney NSW 2000

Tel: 1800 066 844
Fax: +612 9394 7601

Email: info@copyright.com.au
Website: www.copyright.com.au

Recent changes to the Illustration Fund

CAL has made a number of changes to the timing of distributions in recent years to speed up the payments of licence fees to members.

The changes being made during 2009 to the distribution of licence fees set aside for the Illustration Fund are part of this ongoing work. These changes will bring forward distribution of the Illustration Fund by about ten months.

Forthcoming distributions of schools' hardcopy licence fees

From June to September 2009, members will receive a notification setting out the amount(s) they are entitled to claim from the 2008 Illustration Fund, the 2009 schools' distribution, and the 2009 Illustration Fund.

If CAL had not made these changes, members would not have been notified of amounts from the 2009 Illustration Fund until April 2010. This means rightsholders of artistic works will receive the equivalent of two payments from the Illustration Fund during 2009, as well as payment from the main schools' distribution.

Calculation of payments for artistic works and accompanying text

The method of calculation of the Illustration Fund has also changed and will affect the amounts allocated to individual works.

Until now, all pages of text, including those with accompanying artworks were paid at the same rate. From 2009, pages of text with accompanying artworks will receive a smaller share of each distribution pool.

In addition, multiple accompanying artistic works within a page of text will now be allocated a proportion of that page. For example, if there are four artistic works on a page, the amount allocated for artistic works on that page will be divided four ways.

These changes better reflect the way that text and artistic works appear in a publication, and are intended to provide a more equitable distribution to CAL's members.

Importantly, these changes do not reduce (or increase) the total pool available for the Illustration Fund or the schools' licence in general.

Please note that the survey methodology which provides the records on which the distributions are based has not changed. Also, payments for use of 'stand alone' artworks (ie; artistic works that are used separately from text) have not changed.

Future distributions

CAL anticipates returning to an annual cycle of distributions in 2010. Under this cycle, members will receive one payment for the use of their text and artistic works under the schools' hardcopy licence identified in the preceding year. CAL will notify members of these payments in August and September each year.

The above information is further explained in an information sheet, available for download at www.copyright.com.au/assets/documents/Artistic%20works.pdf



COPYRIGHT AGENCY LIMITED®

Who is CAL?

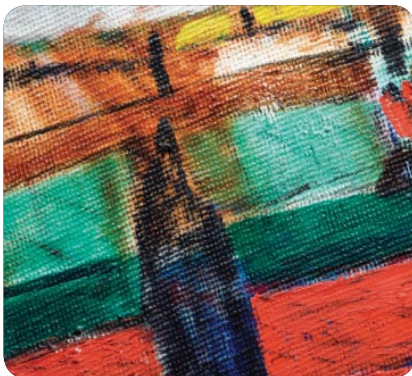
Copyright Agency Limited (CAL) is a not-for-profit company set up by Australian authors, journalists, visual artists, photographers and publishers to manage part of their copying and communication rights.

CAL is owned by its members, membership is free and members give CAL a non-exclusive licence in respect of their works.

Code of Conduct

CAL is a signatory to the Code of Conduct for Copyright Collecting Societies (the Code). It is designed to ensure that the rights of all members and licensees are clearly stated, and that the operations of collecting societies are transparent and accessible.

The Code includes requirements for the Complaints Handling and Dispute Resolution procedures that collecting societies must follow. The Code and these procedures are available from CAL's website and on request.



More information

Copyright Agency Limited
Level 15, 233 Castlereagh Street,
Sydney NSW 2000

Tel: 1800 066 844
Fax: +612 9394 7601

Email: info@copyright.com.au
Website: www.copyright.com.au